

---

# COUNTRY SPACE

*Your Rural Event Space Provider*

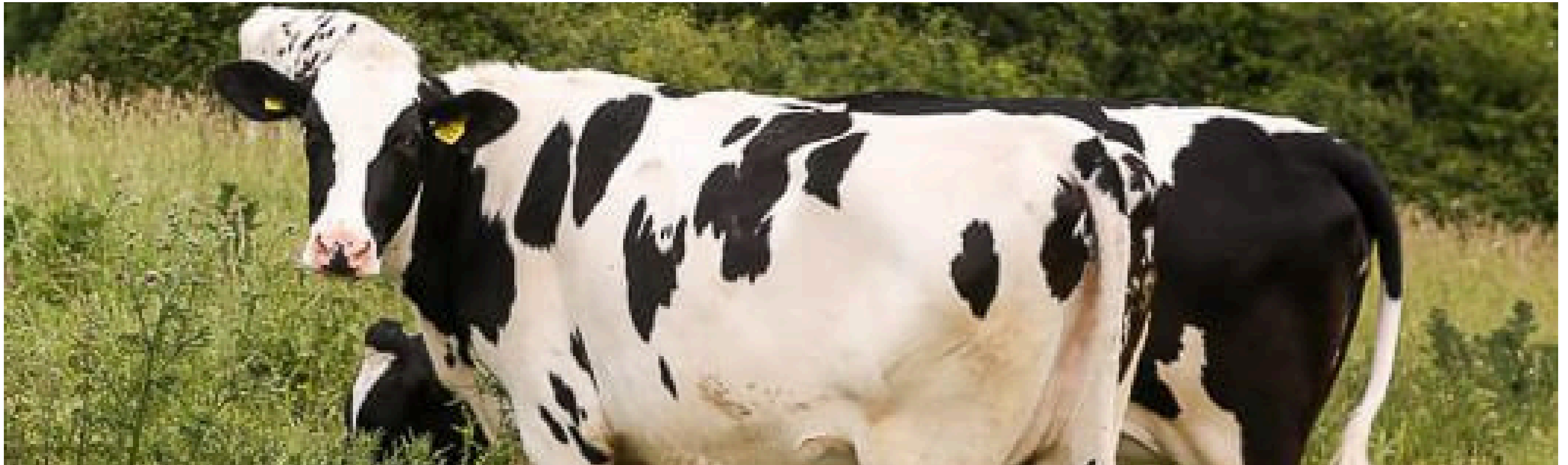
Become A Partner and List Your Venue



# OUR MISSION

At Country Space, our vision is simple yet powerful: to safeguard British farming and preserve rural landscapes by reinvigorating estates with sustainable, event-based revenue. In a time when the farm-to-fork model faces unprecedented challenges, our approach offers a meaningful lifeline, supporting local agriculture while creating unforgettable event experiences.

We believe events can do more than entertain, they can revive communities, empower local suppliers, and reshape the way we value rural venues. By fostering partnerships that prioritise sustainability, community engagement, and economic accessibility, we are redefining what it means to host with purpose





# INTRODUCTION

Across the UK, farmers and rural landowners are opening their gates to a new kind of opportunity: small-scale corporate events, wellness retreats, strategy days, workshops, and outdoor experiences.

Country Space connects your land with companies, teams, and organisers looking for authentic countryside spaces, while ensuring you stay in control of your land, your time, and your boundaries.



# WHY PARTNER WITH US

A trusted platform built for rural Britain

- New income streams without building new facilities
- Low-impact bookings that respect your land and your lifestyle
- A growing national network of countryside venues
- Support at every step — from safety templates to pricing guidance
- Founder-led, mission-driven: supporting British farming through events



# WHAT YOU CAN EARN

Your land can generate income through:

- Team away days
- Strategy offsites
- Wellness and yoga retreats
- Outdoor workshops
- Charity events
- Filming and photography
- Micro-events and private hires

**Land can start from  
£500 Half Day  
£1200 Full Day**

You choose what's right for your land. We help you price it confidently.



# WHAT'S INCLUDED WHEN YOU LIST

Your listing includes:

- A professionally written venue profile
- High-quality imagery and presentation
- Safety and risk-assessment templates
- Pricing guidance
- Access to our corporate event agents to support with showrounds and closing enquires.
- Visibility across our marketing channels - Newsletters, Podcast, Blogs and Social Posts
- Monthly venue performance insights
- Optional consulting for land development and event readiness



# PRICING TO LIST

A clear, simple structure:

- Monthly listing fee £20 per month
- No commission on bookings \*
- No hidden charges
- Optional add-ons for consulting or marketing boosts

This keeps you in control of your income and ensures transparency from day one.

\*Some venues prefer us to take over all their enquiry handling and showrounds, we would take a small industry standard of 10% on confirmed bookings if you chose this option



# HOW WE DRIVE ENQUIRIES

Your venue benefits from our full marketing ecosystem:

- Website traffic from corporate event planners
- LinkedIn campaigns targeting decision-makers
- Newsletters, blogs, and founder-led storytelling
- Podcast features and educational content
- Partnerships with third-party event agents
- SEO-optimised venue pages
- Press and PR outreach
- Seasonal campaigns aligned with corporate budgets
- Venue Showcases Spring and Summer to drive people to your venues. \*some costs may occur but always based on both parties budgets.



# HOW TO GET STARTED

1. Book a discovery call
2. Share your land details
3. We create your listing
4. You start receiving enquiries

**Simple, supportive, and built around your schedule.**

---

# THANK YOU!

*Samantha Gourd*

